



### General Description:

The EX-LITE STM stadium/sport light fixture is a perfect combination of styling and engineering. It offers 4 different beam angles. Remote driver mounting is available for easy maintenance.

### Construction:

- Revelational heatsink design.
- Corrosion resistant polyester powder coat finish, available in custom colors.
- Cast aluminum structure that resists high shock and vibration.
- Integrated cooling fins maximize heat capacity.

### Mounting:

- Multiple mounting options with slipfitter, yoke and surface mount.
- Driver can be remote mounted.

### Electrical:

- High Power Factor, low THD UL listed driver with 10KV surge protection.
- Universal line voltage input 120-277V, 347/480V optional
- FCC compliant
- 0-10V dimmable optional

### Optical:

- Wide range of beam angles available from 15° to 60°
- Full range CCT from 3000K to 5700K

### Accessories:

- Laser aiming kit
- Eye lip visor
- Remote driver
- Exterior panelboard for remote driver mounting (optional).

### Warranty:

- 5 years' warranty for complete fixture

### Listings:

- ETL
- DLC
- RoHs
- IP65



### Ordering Information:

Family Model	Wattage	CCT	Beam Angle	Mounting	Input Voltage
STM	600W = 600W	57K = 5700K	15D = 15 Degrees	YK = Yoke Mount	(blank) = 120-277V, Std
	800W = 800W	50K = 5000K	30D = 30 Degrees	SF = Slip Fitter	HV = 347-480V
		40K = 4000K	45D = 45 Degrees	CL = Clamp	
		30K = 3000K	60D = 60 Degrees		

PROJECT NAME: \_\_\_\_\_ CATALOG NUMBER: \_\_\_\_\_

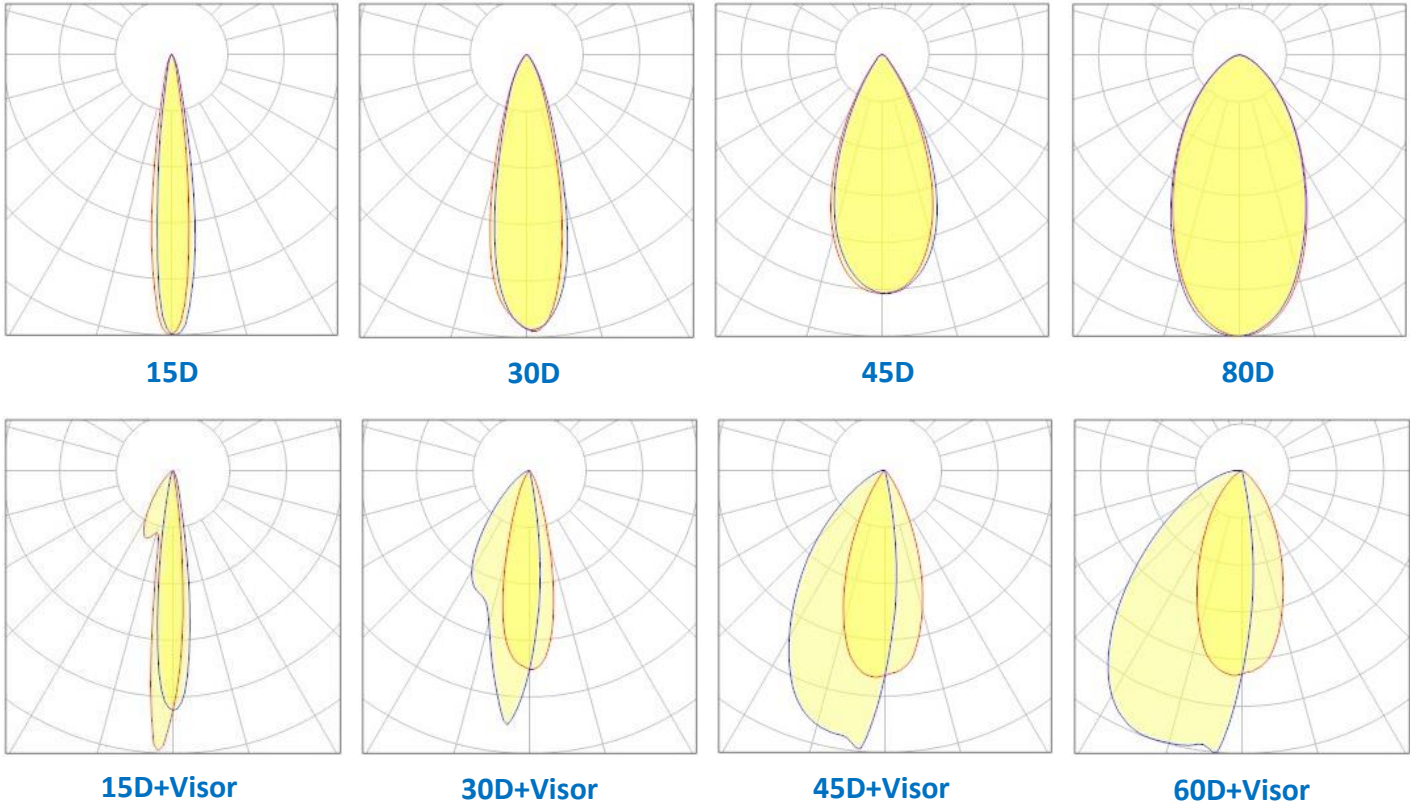
NOTES: \_\_\_\_\_ FIXTURE TYPE: \_\_\_\_\_

# Stadium Light

**Specs:**

Family Model	Wattage	Lumens	lm/W	CCT	CRI
STM-600W	600W	96,000lm	160lm/W	30K/40K/50K/57K	75+
STM-800W	800W	128,000lm	160lm/W	30K/40K/50K/57K	75+

**Photometrics:**

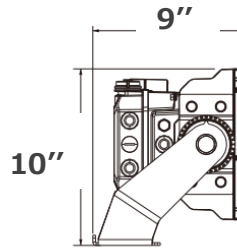
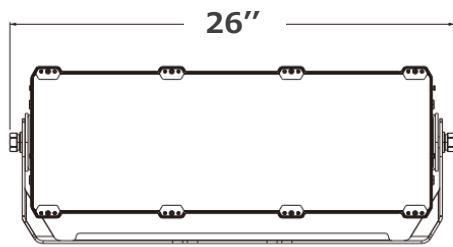


**Mounting Options:**

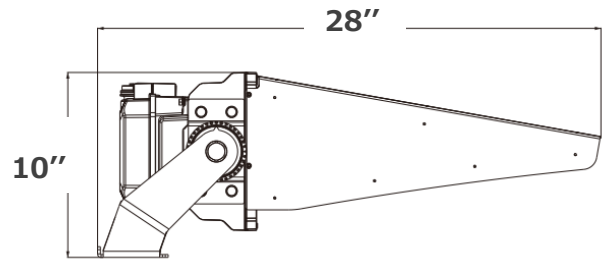
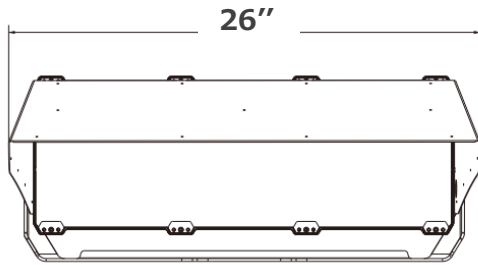


**Product Dimensions:**

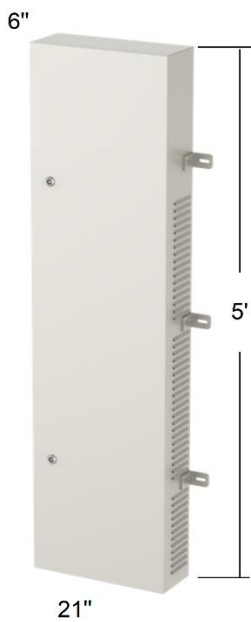
Without Visor



With Visor



**Exterior Panelboard for remote driver mounting. Shapes & dimensions:**



**37.5Amp**



**150Amp**



**70Amp**